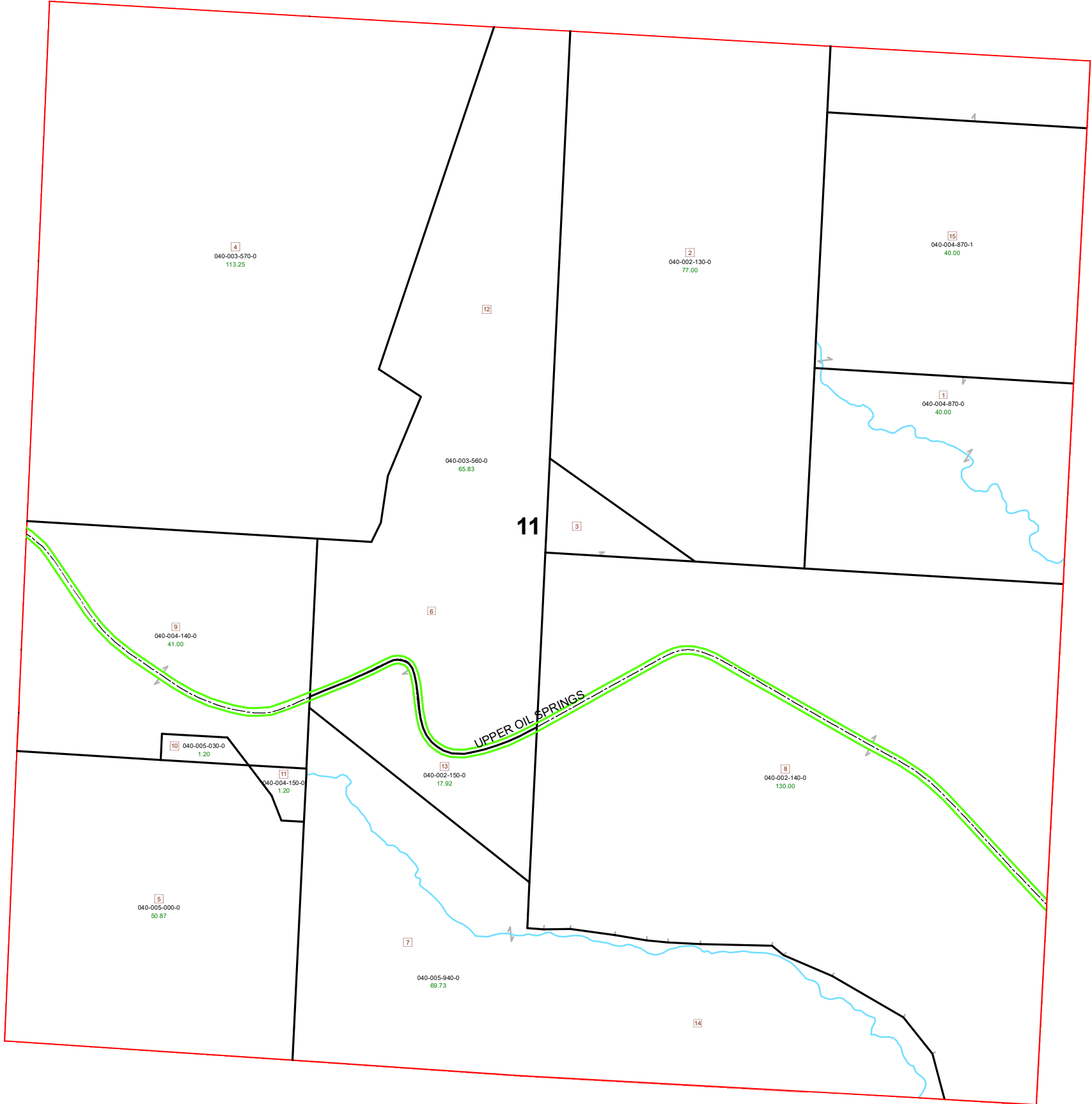
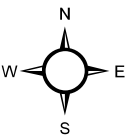


DEERFIELD TOWNSHIP SECTION 11 R13- TWP 9 MORGAN COUNTY, OH

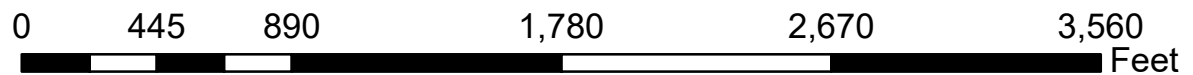


PIN	VOL	PAGE	Owner	LegalDescr	Acres
040-002-150-0	OR203	2262	JADWIN KENNETH C & DONNA S TOD-J	R13 T09 S11 SD 3-13	17.92
040-002-130-0	OR203	2262	JADWIN KENNETH C & DONNA S TOD-J	R13 T09 S11 SD 2	77
040-002-140-0	OR203	2262	JADWIN KENNETH C & DONNA S TOD-J	R13 T09 S11 SD 8	130
040-005-940-0	OR43	617	MILLER LEROY A & MATTIE W	R13 T09 S11 SD 7 SU	69.73
040-003-560-0	OR38	408	MJETZEL JOHN R & ROBERT & THOMA	R13 T09 S11 SD 6-12	65.83
040-003-570-0	OR38	404	MJETZEL JOHN R & ROBERT & THOMA	R13 T09 S11 SD 4 UN	113.25
040-004-870-1	OR188	568	MJETZEL JOHN R TRUSTEE	R13 T09 S11 SD 15	40
040-004-870-0	OR188	568	MJETZEL JOHN R TRUSTEE, ROBERT N	R13 T09 S11 SD 1	40
040-004-150-0	D.V 200	160	PETTET BURRELL KLEITA	R13 T09 S11 SD 11	1.2
040-004-140-0	D.V 200	160	PETTET BURRELL KLEITA	R13 T09 S11 SD 9	41
040-005-000-0	D.V 144	523	SIDWELL J TODD & KATHRYN A	R13 T09 S11 SD 5 SU	50.87
040-005-030-0	D.V 144	523	SIDWELL J TODD & KATHRYN A	R13 T09 S11 SD 10 S	1.2



Boundaries

- Future Split (dashed pink line)
- Parcel (solid black line)
- County (thick grey line)
- Lot (yellow line)
- Section (red line)
- Township (dashed red line)
- Symbols (grey line)
- Subdivisions (yellow shaded area)
- Roads (dashed black line)
- Hydro (blue line)
- ROW (green line)



Source: Morgan County Engineer's Office
 Author: Marcia Wolfe
 Date: 5/21/2020



Disclaimer: The information that these maps contains is for reference purposes only. Please bring any errors to the attention of the Engineer's Office staff.
 Thank you